

# Use and Maintenance User Manual

**BIOGENESIS** 

Biogenesis S.r.l.  
www.bio-genesis.it

## Wheeled Fire Extinguisher, 50 Kg Carbon Dioxide



*Note: image is for illustrative purpose only, the product purchased can has some difference*

- **CYLINDER**  
Alloy steel, external powder coating, color Red Ral 3000.
- **EXTINGUISHING AGENT**  
Carbon Dioxide 99,99 % (CO<sub>2</sub>).
- **VALVE**  
W 28.8, brass body, handwheel red painting, with protection for valve.
- **USE**  
B fire rating (flammable liquids).
- **BRACKET**  
Chassis on wheels, red painting Ral 3000.

© REPRODUCTION IS PROHIBITED

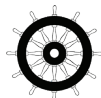
50 Kg carbon dioxide wheeled fire extinguisher, temperature range from -30°C to +60°C, manufactured in accordance to **UNI EN 1866-1 (D.M. 6.3.92)**, certified according to the directive for pressure equipment PED 2014/68/EU. Quality Product certification guaranteed by Bureau Veritas Italia.

Suitable for use on fire involving electrical voltages up to 1'000 V, at a minimum distance of 1 mt.

APPROVED/CERTIFIED FIRE EXTINGUISHER:



For certified MED 2014/90/EU version:  
cod. 14504



**FIRE  
RATING :**



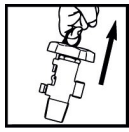
233

# Wheeled Fire Extinguisher, 50 Kg Carbon Dioxide

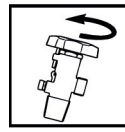
## TECHNICAL SPECIFICATIONS

FIRE RATING	233 B
EXTINGUISHING AGENT	Carbon Dioxide 99,99 % (CO <sub>2</sub> )
TEMPERATURE RANGE	-30°C / +60°C
NOMINAL CHARGE	50 Kg
FULL WEIGHT	~ 145 Kg
DIMENSIONS	Height 1270 +/-5 mm ; Width 1425 +/-5 mm Depth 580 +/-5 mm
DISCHARGE TIME	~ 48,9 seconds

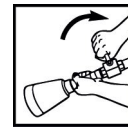
## MODALITY OF USE



- 1) UNROLL THE HOSE
- 2) REMOVE SAFETY PIN



- 3) OPEN THE VALVE



- 4) HOLD THE NOZZLE, MOVE THE LEVER AND AIM THE JET AT BASE OF FIRE

Follow the instructions present on the marking label.

**ATTENTION:** Do not direct the jet at people. If you're dispensing in close spaces, then ventilate the room. The fire extinguisher can be used on fire involving electrical voltages up to 1'000 V, at a distance of 1 meter.

## INSTALLATION AND COMMISSIONING

The installation of the fire extinguisher must be performed according to the rules in force. The fire extinguisher have to be installed in areas with large spaces and free from obstacles. The fire extinguisher must be free of obstructions and marked by an appropriate identifying label. It is recommended to install it in a dry place, protected from the atmospheric agents. It is recommended the installation of water-based fire extinguishers for close spaces. The commissioning of the fire extinguisher for the protection of the area must be carried out by qualified personnel according to the rule in force within 6 months from the date of production and/or placing on the market, reported in the declaration of conformity released by the producer.

## MAINTENANCE PERIODS FOR EFFICIENCY GUARANTEES

The maintaining of the product efficiency have to be carried out from the responsible person. It is recommended a visual check of the efficiency state every three months since the commissioning time apart if there are different dispositions. It is advisable to : verify that the fire extinguisher would be in a correct position, safe and stable, free from impediment for the use; identify the fire extinguisher with an appropriate identification sign; make sure of its structural integrity and that is free from any damage; check that the original documentations is available. Any restoration operations and instrumental checking have to be realized exclusively by qualified personnel who possess the necessary documentations to maintain the constancy of the product performance. Any tampering or intromission by unauthorized personnel voids the product warranty.